

Clamps listed by: Type (Heavy, Standard, Specialty), Finish (Regular, Zinc Plated, Stainless Steel), Style

# Clamps



# Muffler Clamps - Heavy Duty

## HEAVY DUTY GM STYLE SADDLE, 3/8" U-BOLT WITH FLANGE NUTS

Size	ni Number (Bulk 50)	ni Number (Indv Boxed 50)	ni Number (10 Pack Indv Boxed 50 Per Box)	Item Number (Bulk 100)	Item Number (Indv Boxed 50)	Item Number (10 Pack Indv Boxed 50 Per Box)
1-1/2"	103112-50B	103112-50	103112-10T	180	80	85080
1-3/4"	103134-50B	103134-50	103134-10T	182	82	85082
1-7/8"	103178-50B	103178-50	103178-10T	183	83	85083
2"	103200-50B	103200-50	103200-10T	184	84	85084
2-1/8"	103218-50B	103218-50	103218-10T	185	85	85085
2-1/4"	103214-50B	103214-50	103214-10T	186	86	85086
2-1/2"	103212-50B	103212-50	103212-10T	187	87	85087
2-3/4"	103234-50B	103234-50	103234-10T	188		
3"	103300-50B	103300-50	103300-10T	189	89	85089



## HEAVY DUTY SADDLE, ROUND HOLES, 3/8" U-BOLT WITH HEX NUTS

Size	ni Number (Bulk 50)	ni Number (Indv Boxed 50)	Item Number (Bulk 50)	Item Number (Indv Boxed 50)
1-1/2"	106112-50B	106112-50	1320	20
1-5/8"	106158-50B	106158-50	1327	21
1-3/4"	106134-50B	106134-50	1321	22
1-7/8"	106178-50B	106178-50	1322	23
2"	106200-50B	106200-50	1323	24
2-1/8"	106218-50B	106218-50	1326	25
2-1/4"	106214-50B	106214-50	1324	26
2-1/2"	106212-50B	106212-50	1325	27
2-3/4"	106234-50B	106234-50	1328	28
3"	106300-50B	106300-50	1329	29



# Muffler Clamps - Heavy Duty

## HEAVY DUTY SADDLE, SLOTTED HOLES, 3/8" U-BOLT WITH FLANGE NUTS

Size	ni Number (Bulk 50)	ni Number (Ind Boxed 50)	Item Number (Bulk 50)	Item Number (Indv Boxed 50)
1-1/2"	107112-50B	107112-50	1312	12
1-3/4"	107134-50B	107134-50	1314	14
1-7/8"	107178-50B	107178-50	1315	15
2"	107200-50B	107200-50	1316	16
2-1/4"	107214-50B	107214-50	1318	18
2-1/2"	107212-50B	107212-50	1319	19
3"	107300-50B	107300-50	111	11



## HEAVY DUTY SADDLE, ROUND HOLES, 3/8" U-BOLT WITH FLANGE NUTS

Size	ni Number (Bulk 50)	ni Number (Bulk 10)	ni Number (Indv Boxed 50)	ni Number (Indv Boxed 10)	Item Number (Bulk 50)	Item Number (Indv Boxed 50)	Notes
1-1/2"	108112-50B		108112-50		1240		
1-5/8"	108158-50B		108158-50		1241		
1-3/4"	108134-50B		108134-50		1242		
1-7/8"	108178-50B		108178-50		1243		
2"	108200-50B		108200-50		1244		
2-1/8"	108218-50B		108218-50		1245		
2-1/4"	108214-50B		108214-50		1246		
2-1/2"	108212-50B		108212-50		1247		
2-3/4"	108234-50B		108234-50		1248	60	
3"	108300-50B		108300-50		1249	61	
3-1/4"		108314-10B		108314-10			Square Saddle
3-1/2"		108312-10B		108312-10		63	Square Saddle
4"		108400-10B		108400-10		65	Square Saddle
4-1/2"		108412-10B		108412-10		67	Square Saddle
5"		108500-10B		108500-10		68	Square Saddle
6"		108600-10B		108600-10			Square Saddle



# Muffler Clamps - Heavy Duty Zinc Plated

## ZINC PLATED HEAVY DUTY SADDLE, SLOTTED HOLES, 3/8" U-BOLT WITH FLANGE NUTS

Size	ni Number (Bulk 50)	ni Number (Indv Boxed 50)
1-1/2"	107112P-50B	107112P-50
1-3/4"	107134P-50B	107134P-50
1-7/8"	107178P-50B	107178P-50
2"	107200P-50B	107200P-50
2-1/4"	107214P-50B	107214P-50
2-1/2"	107212P-50B	107212P-50
3"	107300P-50B	107300P-50



## ZINC PLATED HEAVY DUTY SADDLE, ROUND HOLES, 3/8" U-BOLT WITH FLANGE NUTS

Size	ni Number (Bulk 50)	ni Number (Bulk 10)	ni Number (Ind Boxed 10)	ni Number (Indv Boxed 50)	Notes
1-1/2"	108112P-50B			108112P-50	
1-5/8"	108158P-50B			108158P-50	
1-3/4"	108134P-50B			108134P-50	
1-7/8"	108178P-50B			108178P-50	
2"	108200P-50B			108200P-50	
2-1/8"	108218P-50B			108218P-50	
2-1/4"	108214P-50B			108214P-50	
2-1/2"	108212P-50B			108212P-50	
2-3/4"	108234P-50B			108234P-50	
3"	108300P-50B			108300P-50	
3-1/4"		108314P-10B	108314P-10		Square Saddle
3-1/2"		108312P-10B	108312P-10		Square Saddle
4"		108400P-10B	108400P-10		Square Saddle
4-1/2"		108412P-10B	108412P-10		Square Saddle
5"		108500P-10B	108500P-10		Square Saddle
6"		108600P-10B	108600P-10		Square Saddle



## STAINLESS STEEL HEAVY DUTY SADDLE, SLOTTED HOLES, 3/8" U-BOLT WITH FLANGE NUTS

Size	ni Number (Indv Boxed 10)
1-1/2"	107112SS-10
1-3/4"	107134SS-10
1-7/8"	107178SS-10
2"	107200SS-10
2-1/4"	107214SS-10
2-1/2"	107212SS-10
3"	107300SS-10



## STAINLESS STEEL HEAVY DUTY SADDLE, ROUND HOLES, 3/8" U-BOLT WITH HEX NUTS

Size	ni Number (Indv Boxed 50)	ni Number (Indv Boxed 20)	Item Number (Indv Boxed 50)	Item Number (Indv Boxed 20)	Notes
1-1/2"	1010112-50		100		
1-5/8"	1010158-50		99		
1-3/4"	1010134-50		101		
1-7/8"	1010178-50		102		
2"	1010200-50		103		
2-1/8"	1010218-50		106		
2-1/4"	1010214-50		104		
2-1/2"	1010212-50		105		
3"	1010300-50		107		
3-1/2"		1010312-20		108	Square Saddle
4"		1010400-20		109	Square Saddle
5"		1010500-20		110	Square Saddle



## STAINLESS STEEL HEAVY DUTY SADDLE, ROUND HOLES, 3/8" U-BOLT WITH FLANGE NUTS

Size	ni Number (Indv Boxed 10)	Notes
1-1/2"	108112SS-10	
1-5/8"	108158SS-10	
1-3/4"	108134SS-10	
1-7/8"	108178SS-10	
2"	108200SS-10	
2-1/8"	108218SS-10	
2-1/4"	108214SS-10	
2-1/2"	108212SS-10	
2-3/4"	108234SS-10	
3"	108300SS-10	
3-1/4"	108314SS-10	Square Saddle
3-1/2"	108312SS-10	Square Saddle
4"	108400SS-10	Square Saddle
4-1/2"	108412SS-10	Square Saddle
5"	108500SS-10	Square Saddle
6"	108600SS-10	Square Saddle



# Muffler Clamps - Standard Duty

## STANDARD DUTY SADDLE, ROUND HOLES, 5/16" U-BOLT WITH HEX NUTS



Size	ni Number (Bulk 100)	ni Number (Indv Boxed 50)	Item Number (10 Pack Indv Boxed 50 Per Box)	Item Number (Bulk 100)	Item Number (Indv Boxed 100)	Item Number (10 Pack Indv Boxed 100 Per Box)
1-1/8"	102118-100B	102118-50	102118-10T	130	30	85030
1-1/4"	102114-100B	102114-50	102114-10T	131	31	85031
1-1/2"	102112-100B	102112-50	102112-10T	132	32	85032
1-5/8"	102158-100B	102158-50	102158-10T	133	33	85033
1-3/4"	102134-100B	102134-50	102134-10T	134	34	85034
1-7/8"	102178-100B	102178-50	102178-10T	135	35	85035
2"	102200-100B	102200-50	102200-10T	136	36	85036
2-1/8"	102218-100B	102218-50	102218-10T	137	37	85037
2-1/4"	102214-100B	102214-50	102214-10T	138	38	85038
2-1/2"	102212-100B	102212-50	102212-10T	139	39	85039

## STANDARD DUTY SADDLE, ROUND HOLES, 5/16" U-BOLT WITH FLANGE NUTS



Size	ni Number (Bulk 50)	ni Number (Bulk 100)	ni Number (Indv Boxed 50)	ni Number (Indv Boxed 100)	Item Number (Bulk 100)
1-1/8"	104118-50B	104118-100B	104118-50	104118-100	
1-1/4"	104114-50B	104114-100B	104114-50	104114-100	
1-1/2"	104112-50B	104112-100B	104112-50	104112-100	1332
1-5/8"	104158-50B	104158-100B	104158-50	104158-100	1333
1-3/4"	104134-50B	104134-100B	104134-50	104134-100	1334
1-7/8"	104178-50B	104178-100B	104178-50	104178-100	1335
2"	104200-50B	104200-100B	104200-50	104200-100	1336
2-1/8"	104218-50B	104218-100B	104218-50	104218-100	1337
2-1/4"	104214-50B	104214-100B	104214-50	104214-100	1338
2-1/2"	104212-50B	104212-100B	104212-50	104212-100	1339



## STANDARD DUTY SADDLE, 5/16" U-BOLT WITH BIG NUTS (FITS 9/16" SOCKET)

Size	ni Number (Bulk 100)	Item Number (Bulk 100)
1-1/8"	105118-100B	
1-1/4"	105114-100B	
1-1/2"	105112-100B	1232
1-5/8"	105158-100B	1233
1-3/4"	105134-100B	1234
1-7/8"	105178-100B	1235
2"	105200-100B	1236
2-1/8"	105218-100B	1237
2-1/4"	105214-100B	1238
2-1/2"	105212-100B	1239



## STANDARD DUTY SADDLE, 5/16" U-BOLT W/ HIGH STYLE FLANGE NUT (7/16" HIGH FOR USE WITH IMPACT SOCKETS)

Size	ni Number (Bulk 100)
1-1/2"	1014112-100B
1-3/4"	1014134-100B
1-7/8"	1014178-100B
2"	1014200-100B
2-1/4"	1014214-100B
2-1/2"	1014212-100B





## ZINC PLATED STANDARD DUTY SADDLE, ROUND HOLES, 5/16" U-BOLT WITH FLANGE NUTS

Size	ni Number (Bulk 50)
1-1/8"	104118P-50B
1-1/4"	104114P-50B
1-1/2"	104112P-50B
1-5/8"	104158P-50B
1-3/4"	104134P-50B
1-7/8"	104178P-50B
2"	104200P-50B
2-1/8"	104218P-50B
2-1/4"	104214P-50B
2-1/2"	104212P-50B



## ZINC PLATED STANDARD DUTY SADDLE, 5/16" U-BOLT W/ HIGH STYLE FLANGE NUT (7/16" HIGH FOR USE WITH IMPACT SOCKETS)

Size	ni Number (Bulk 50)
1-1/2"	1014112P-50B
1-3/4"	1014134P-50B
1-7/8"	1014178P-50B
2"	1014200P-50B
2-1/4"	1014214P-50B
2-1/2"	1014212P-50B



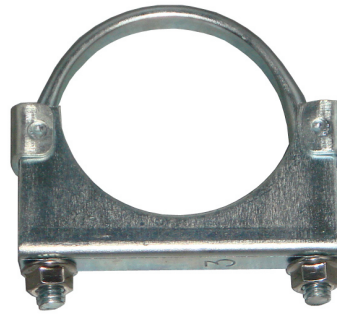
## AIR TUBE CLAMPS

Size	ni Number (Bulk 25)	Item Number (Bulk 25)
1/2"	102012-25B	300A
3/4"	102034-25B	301A
5/8"	102058-25B	302A
1"	102100-25B	303A



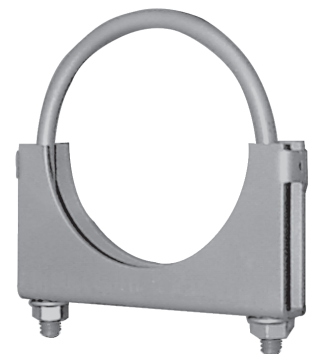
## TRUCK CLAMP HEAVY DUTY ZINC PLATED WITH FLAT U-BOLT, WELDED SADDLE AND FLANGE NUTS

Size	ni Number (Bulk 10)	ni Number (Ind Boxed 10)
2-3/4"	1012234P-10B	1012234P-10
3"	1012300P-10B	1012300P-10
3-1/2"	1012312P-10B	1012312P-10
4"	1012400P-10B	1012400P-10
4-1/2"	1012412P-10B	1012412P-10
5"	1012500P-10B	1012500P-10
5-1/2"	1012512P-10B	1012512P-10
6"	1012600P-10B	1012600P-10



## TRUCK CLAMP HEAVY DUTY WITH ROUND U-BOLT, WELDED SADDLE AND FLANGE NUTS

Size	ni Number (Bulk 50)	ni Number (Bulk 10)	ni Number (Indv Boxed 10)	Item Number (Indv Boxed 50)
2-3/4"	1013234-50B	1013234-10B	1013234-10	260
3"	1013300-50B	1013300-10B	1013300-10	261
3-1/4"		1013314-10B	1013314-10	262
3-1/2"		1013312-10B	1013312-10	263
4"	1013400-50B	1013400-10B	1013400-10	265
4-1/2"		1013412-10B	1013412-10	267
5"		1013500-10B	1013500-10	268
6"		1013600-10B	1013600-10	



# Muffler Clamps - Specialty

## TRUCK CLAMP HEAVY DUTY ZINC PLATED WITH ROUND U-BOLT, WELDED SADDLE AND FLANGE NUTS

Size	ni Number (Bulk 10)	ni Number (Indv Boxed 10)
2-3/4"	1013234P-10B	1013234P-10
3"	1013300P-10B	1013300P-10
3-1/4"	1013314P-10B	1013314P-10
3-1/2"	1013312P-10B	1013312P-10
4"	1013400P-10B	1013400P-10
4-1/2"	1013412P-10B	1013412P-10
5"	1013500P-10B	1013500P-10
6"	1013600P-10B	1013600P-10



## EASYSEAL® BY TORCA® STAINLESS STEEL

Size	ni Number (Indv Boxed 10)
2"	1420
2-1/4"	1421
2-1/2"	1422
2-3/4"	1423
3"	1424
3-1/4"	1425
3-1/2"	1426
3-3/4"	1427
4"	1428
4-1/2"	1429
5"	1430
6"	1431



## TORCTITE® PREFORMED BY TORCA® ALUMINIZED

## TORCTITE® PREFORMED BY TORCA® STAINLESS STEEL

Size	ni Number (Indv Boxed 10)
2-1/2"	1734
2-3/4"	1735
3"	1736
3-1/2"	1737
4"	1738
4-1/2"	1740
5"	1739



Size	ni Number (Indv Boxed 10)
2"	1721
2-1/4"	1722
2-1/2"	1723
2-3/4"	1724
3"	1725
3-1/2"	1726
4"	1727
4-1/2"	1728
5"	1729
6"	1730



# Muffler Clamps - Specialty

## ACCUSEAL® BY TORCA® ALUMINIZED

Size	ni Number (Indv Boxed 10)
2"	1661
2-1/4"	1662
2-1/2"	1663
2-3/4"	1664
3"	1665
3-1/2"	1666
4"	1667
4-1/2"	1668
5"	1669
6"	1670



## ACCUSEAL® BY TORCA® STAINLESS STEEL (409)

Size	ni Number (Indv Boxed 10)
1-3/4"	460
1-7/8"	461
2"	450
2-1/4"	451
2-1/2"	452
2-3/4"	453
3"	454
3-1/2"	455
4"	456
4-1/2"	457
5"	458
6"	459

## ACCUSEAL® BY TORCA® STAINLESS STEEL (430 BRIGHT)

Size	ni Number (Indv Boxed 10)
2"	1671
2-1/4"	1672
2-1/2"	1673
2-3/4"	1674
3"	1675
3-1/2"	1676
4"	1677
4-1/2"	1678
5"	1679
6"	1680

